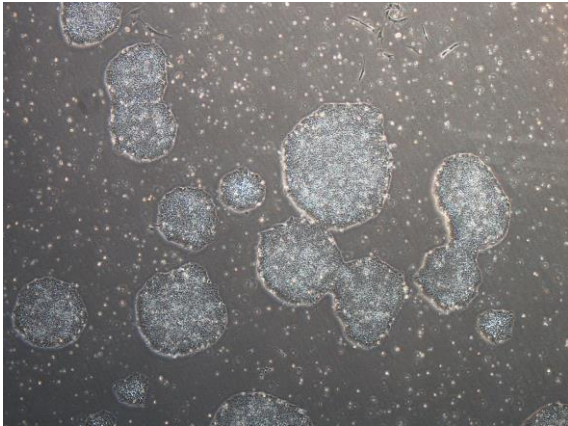
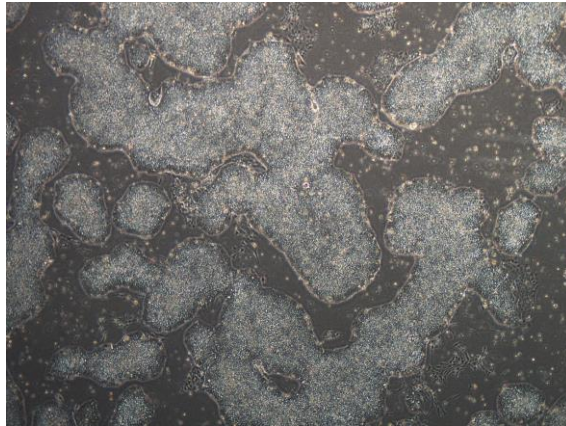


【 CiRA-j-1207 】 Morphology of iPSC colonies

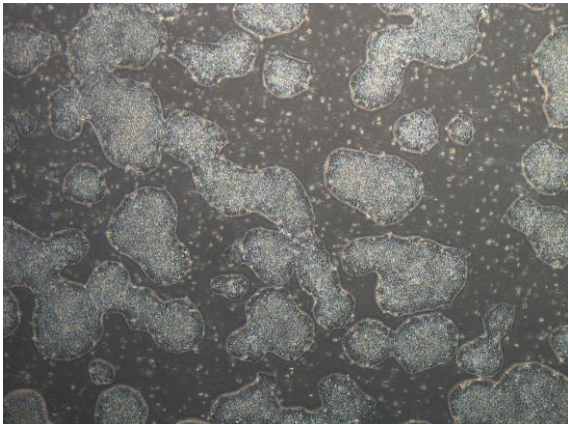
CiRA-j-1207-A: passage-3



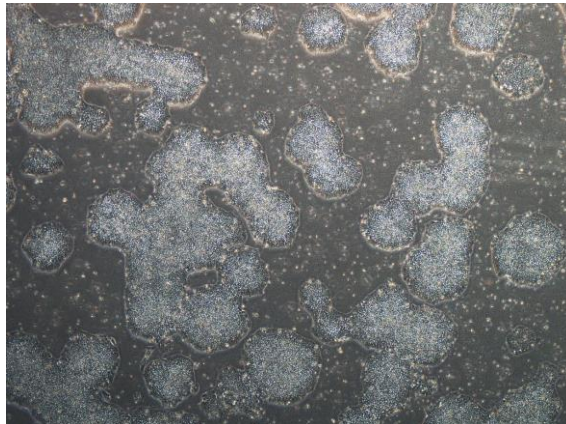
CiRA-j-1207-B: passage-3



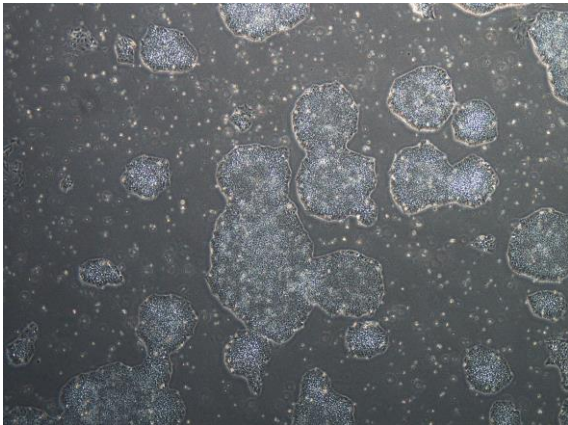
CiRA-j-1207-C: passage-3



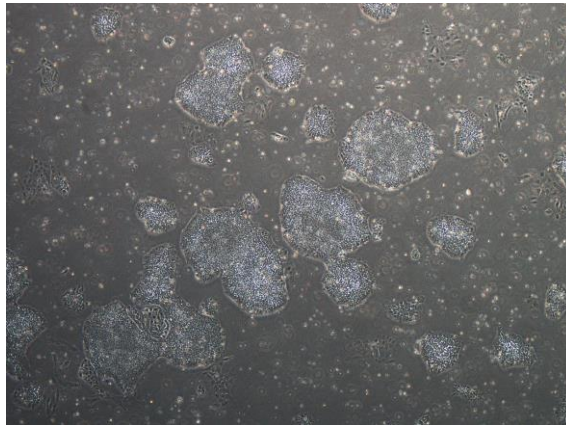
CiRA-j-1207-D: passage-3



CiRA-j-1207-E: passage-3



CiRA-j-1207-F: passage-3



(All images were captured at 4x magnification)